

Prognostic implications of coronary physiological indices in patients with diabetes mellitus

SUPPLEMENTARY DATA**1. Supplementary table 1. Complete list of coinvestigators and their affiliations**

Name	Affiliations
Doyeon Hwang, MD	Department of Internal Medicine and Cardiovascular Center, Seoul National University Hospital, Seoul, Korea
Jinlong Zhang, MD	Department of Internal Medicine and Cardiovascular Center, Seoul National University Hospital, Seoul, Korea
Seokhun Yang, MD	Department of Internal Medicine and Cardiovascular Center, Seoul National University Hospital, Seoul, Korea
Jiesuck Park, MD	Department of Internal Medicine and Cardiovascular Center, Seoul National University Hospital, Seoul, Korea
Seung Hun Lee, MD, PhD	Division of Cardiology, Department of Internal Medicine, Heart Vascular Stroke Institute, Samsung Medical Center, Sungkyunkwan University School of Medicine, Seoul, Korea
Ki Hong Choi, MD	Division of Cardiology, Department of Internal Medicine, Heart Vascular Stroke Institute, Samsung Medical Center, Sungkyunkwan University School of Medicine, Seoul, Korea
Joo Myung Lee, MD, MPH, PhD	Division of Cardiology, Department of Internal Medicine, Heart Vascular Stroke Institute, Samsung Medical Center, Sungkyunkwan University School of Medicine, Seoul, Korea
Ji-Hyun Jung, MD	Sejong General Hospital, Sejong Heart Institute, Bucheon, Korea
Hyung Yoon Kim, MD	Department of Cardiovascular Medicine, Chonnam National University Hospital, Gwangju, Korea
Hae Won Jung, MD	Department of Cardiology, Daegu Catholic University Medical Center, Daegu, Korea
Yun-Kyeong Cho, MD, PhD	Department of Medicine, Keimyung University Dongsan Medical Center, Daegu, South Korea
Hyuck-Jun Yoon, MD, PhD	Department of Medicine, Keimyung University Dongsan Medical Center, Daegu, South Korea
Young Bin Song, MD, PhD	Division of Cardiology, Department of Internal Medicine, Heart Vascular Stroke Institute, Samsung Medical Center, Sungkyunkwan University School of Medicine, Seoul, Korea
Joo-Yong Hahn, MD, PhD	Division of Cardiology, Department of Internal Medicine, Heart Vascular Stroke Institute, Samsung Medical Center, Sungkyunkwan University School of Medicine, Seoul, Korea
Seung-Ho Hur, MD, PhD	Department of Medicine, Keimyung University Dongsan Medical Center, Daegu, South Korea
Masahiro Hoshino, MD	Division of Cardiovascular Medicine, Tsuchiura Kyodo General Hospital, Ibaraki, Japan
Yoshihisa Kanaji, MD	Division of Cardiovascular Medicine, Tsuchiura Kyodo General Hospital, Ibaraki, Japan
Rikuta Hamaya, MD	Division of Cardiovascular Medicine, Tsuchiura Kyodo General Hospital, Ibaraki, Japan
Yoshinori Kanno, MD	Division of Cardiovascular Medicine, Tsuchiura Kyodo General Hospital, Ibaraki, Japan
Masahiro Hada, MD	Division of Cardiovascular Medicine, Tsuchiura Kyodo General Hospital, Ibaraki, Japan
Masao Yamaguchi, MD	Division of Cardiovascular Medicine, Tsuchiura Kyodo General

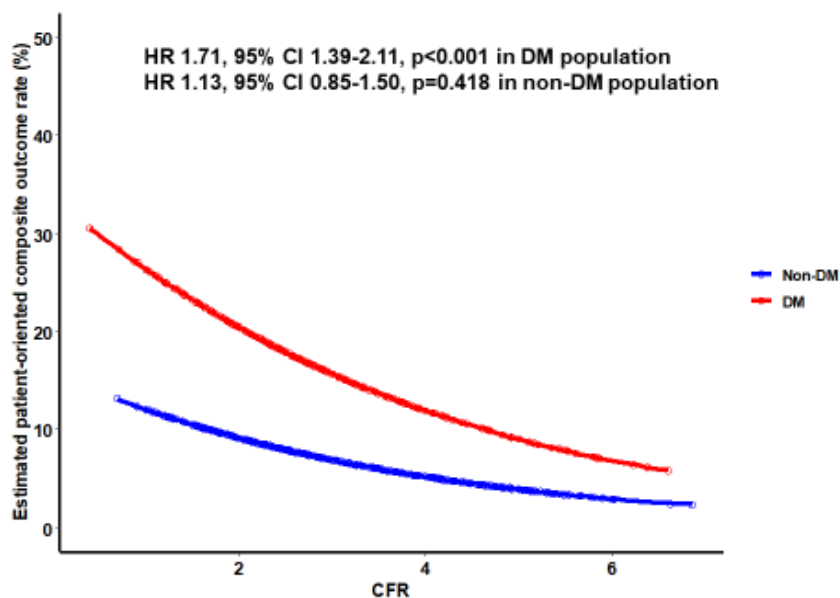
Prognostic implications of coronary physiological indices in patients with diabetes mellitus

	Hospital, Ibaraki, Japan
Hiroaki Ohya, MD	Division of Cardiovascular Medicine, Tsuchiura Kyodo General Hospital, Ibaraki, Japan
Yohei Sumino, MD	Division of Cardiovascular Medicine, Tsuchiura Kyodo General Hospital, Ibaraki, Japan
Eisuke Usui, MD	Division of Cardiovascular Medicine, Tsuchiura Kyodo General Hospital, Ibaraki, Japan
Akinori Sugano, MD	Division of Cardiovascular Medicine, Tsuchiura Kyodo General Hospital, Ibaraki, Japan
Tomoyo Sugiyama, MD, PhD	Division of Cardiovascular Medicine, Tsuchiura Kyodo General Hospital, Ibaraki, Japan
Tadashi Murai, MD, PhD	Division of Cardiovascular Medicine, Tsuchiura Kyodo General Hospital, Ibaraki, Japan
Tetsumin Lee, MD	Department of Cardiovascular Medicine, Tokyo Medical and Dental University, Tokyo, Japan
Taishi Yonetsu, MD	Department of Cardiovascular Medicine, Tokyo Medical and Dental University, Tokyo, Japan
Hernán Mejía-Rentería, MD	Cardiovascular Institute, Hospital Clinico San Carlos, Madrid, Spain
Francesco Lauri, MD	Cardiovascular Institute, Hospital Clinico San Carlos, Madrid, Spain
Sonoka Goto, MD	Cardiovascular Institute, Hospital Clinico San Carlos, Madrid, Spain
Fernando Macaya, MD	Cardiovascular Institute, Hospital Clinico San Carlos, Madrid, Spain
Angela McInerney, MD	Cardiovascular Institute, Hospital Clinico San Carlos, Madrid, Spain
Giacomo Gravina, MD	Cardiovascular Institute, Hospital Clinico San Carlos, Madrid, Spain
Rafael Vera, MD	Cardiovascular Institute, Hospital Clinico San Carlos, Madrid, Spain
Nieves Gonzalo, MD	Cardiovascular Institute, Hospital Clinico San Carlos, Madrid, Spain
Pilar Jimenez-Quevedo, MD	Cardiovascular Institute, Hospital Clinico San Carlos, Madrid, Spain
Ivan Nuñez-Gil, MD	Cardiovascular Institute, Hospital Clinico San Carlos, Madrid, Spain
Pablo Salinas, MD	Cardiovascular Institute, Hospital Clinico San Carlos, Madrid, Spain
Luis Nombela-Franco, MD	Cardiovascular Institute, Hospital Clinico San Carlos, Madrid, Spain
Maria del Trigo, MD	Cardiovascular Institute, Hospital Clinico San Carlos, Madrid, Spain
Antonio Fernández-Ortiz, MD	Cardiovascular Institute, Hospital Clinico San Carlos, Madrid, Spain
Carlos Macaya, MD	Cardiovascular Institute, Hospital Clinico San Carlos, Madrid, Spain
Tsunekazu Kakuta, MD, PHD	Division of Cardiovascular Medicine, Tsuchiura Kyodo General Hospital, Ibaraki, Japan
Javier Escaned, MD, PhD	Cardiovascular Institute, Hospital Clinico San Carlos, Madrid, Spain Centro Nacional de Investigaciones Cardiovasculares Carlos III (CNIC), Madrid, Spain
Bon-Kwon Koo, MD, PhD	Department of Internal Medicine and Cardiovascular Center, Seoul National University Hospital, Seoul, Korea Institute on Aging, Seoul National University, Seoul, Korea

Prognostic implications of coronary physiological indices in patients with diabetes mellitus

2. Supplementary figure 1. Association between CFR and the patient-oriented composite outcome.

Supplementary Figure 1. Association between CFR and patient-oriented composite outcome



The estimated risk of the patient-oriented composite outcome and its relationship with coronary flow reserve is shown. CFR, coronary flow reserve; CI, confidence interval; DM, diabetes mellitus; HR, hazard ratio.