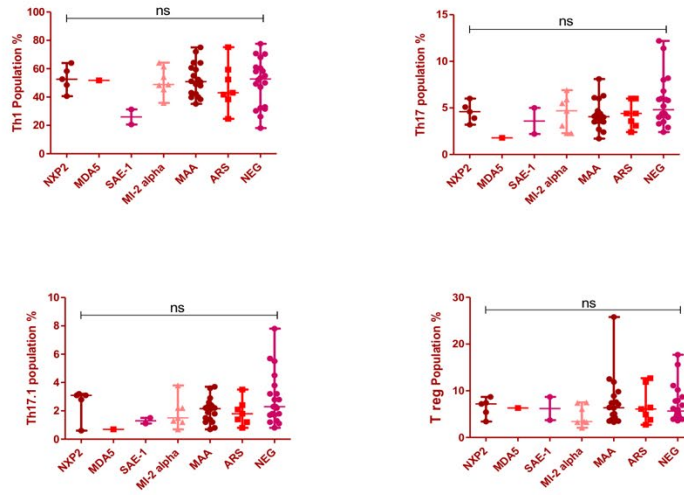


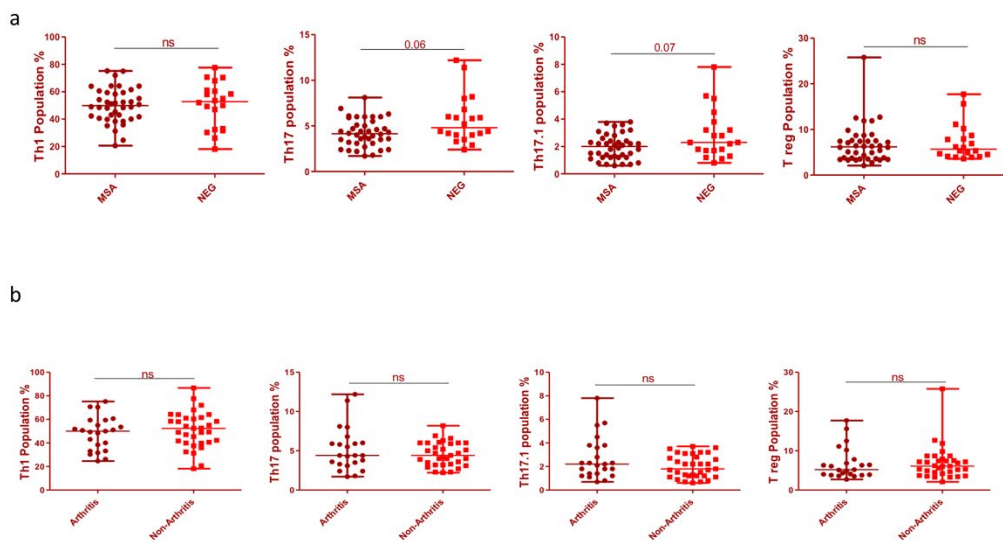
1
2
3

Supplementary figure I: Representative dot plot of T helper cell subsets in IIM stratified by MSA



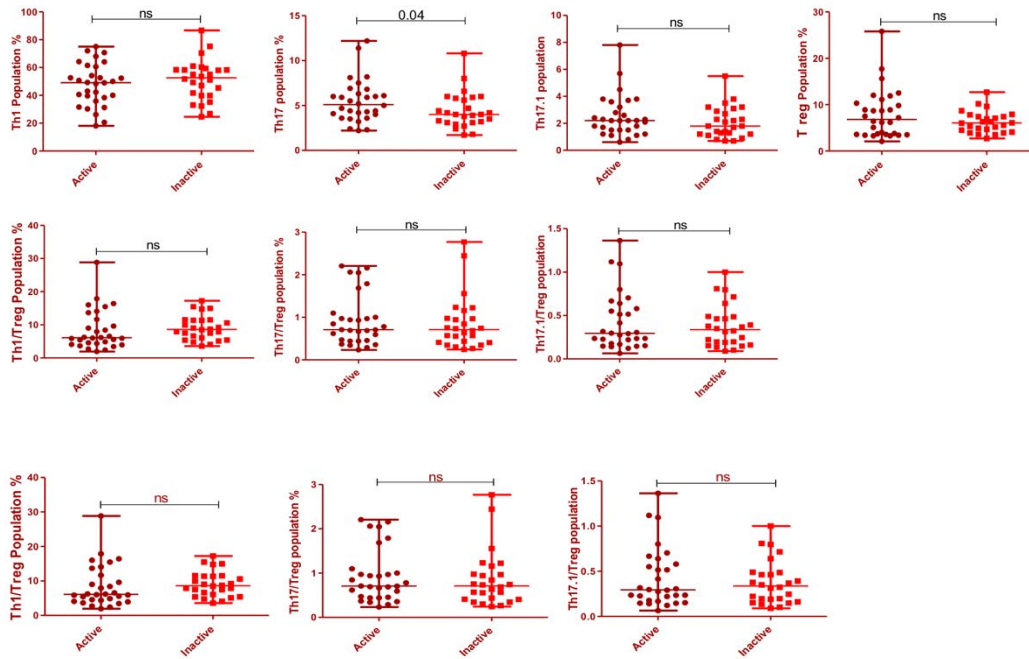
5
6
7
8
9
10
11
12
13
14

Supplementary figure II. Representative dot plot between different subsets of IIM stratified by MSA positivity and presence of arthritis



16
17
18
19
20

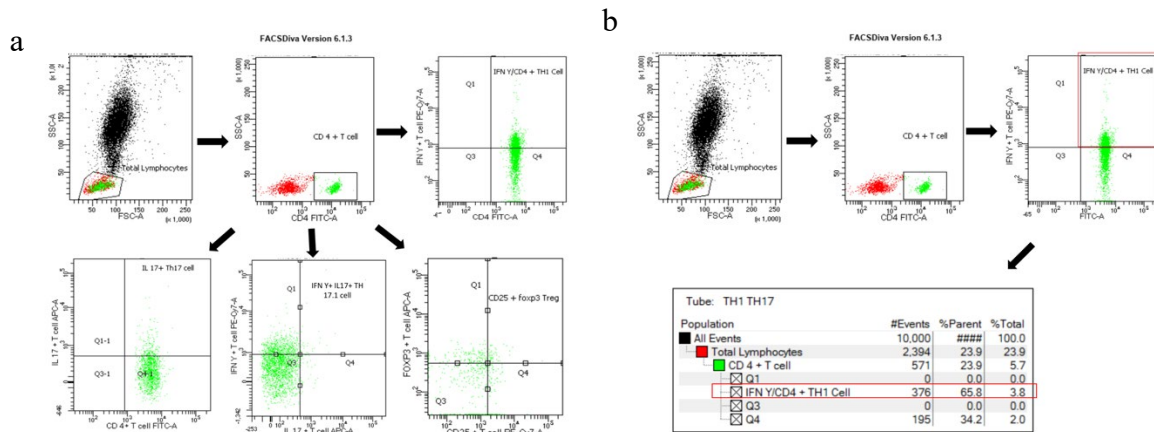
Supplementary figure III: Representative dot plot of T helper cell subsets in Active vs Inactive and their ratio (Th1, Th17 & Th17.1) with Treg subsets



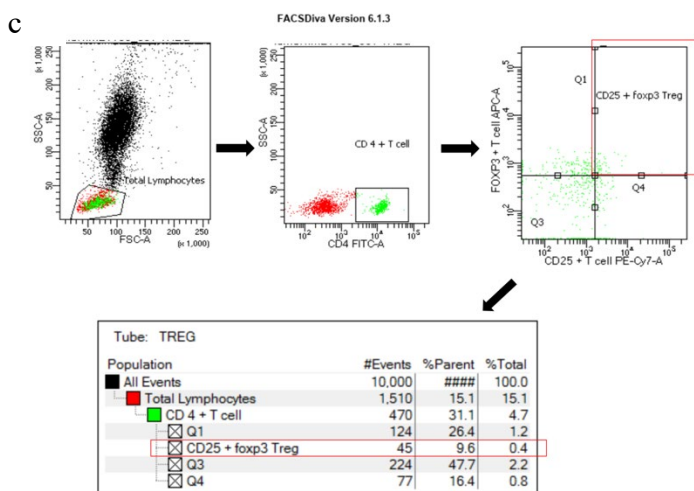
23
24
25
26
27
28
29
30
31

Supplementary figure IV

Flow cytometry plots for CD4+IFN- γ +, CD4+ IL-17+, CD4+IFN- γ +IL-17+, and CD4+CD25+FOXP3+ for Th1, th17, Th17. 1 and Treg cells.



33



34

35

36

37 The standard gating for CD4+ T helper subsets in stimulated vs unstimulated human blood. The
 38 FSC (Forward scatter and SSC (Side scatter) plots were used for lymphocyte gating based on
 39 granularity and size. The CD4 + T cells were gated using a dual colour dot plot of side scatter
 40 versus CD4+ FITC. The specific T cell subsets were analyzed using a dual colour dot plot of 1)
 41 Th1 subsets were gated using CD4+FITC vs IFN-Y PE Cy7 double-positive population. 2) Th17
 42 subsets were gated using CD4+ FITC vs IL17 Alexa flour647 expressing a double-positive
 43 population. 3) Th17.1 subsets were gated on CD4+ FITC positive population and selected IL17
 44 Alexa flour647 vs IFNY + PE-cy7 double-positive population, 4) Treg subsets were gated on
 45 CD4+ FITC positive population and selected CD25+ PE-cy7 vs FoxP3+ Alexa flour647 double-
 46 positive population. (1,2)

47

48 **References**

49 1) Berner B, Akça D, Jung T, Muller GA, Reuss-Borst MA. Analysis of Th1 and Th2 cytokines
 50 expressing CD4+ and CD8+ T cells in rheumatoid arthritis by flow cytometry. *J Rheumatol.*
 51 2000 May;27(5):1128-35. PMID: 10813277.
 52 2) Jain A, Singh H, Nath A, Chaturvedi S, Ajmani S, Misra DP, Agarwal V. Distinct T-cell
 53 immunophenotypic signature in a subset of sarcoidosis patients with arthritis. *J R Coll Physicians*
 54 *Edinb.* 2020 Sep;50(3):226-232. doi: 10.4997/JRCPE.2020.304. PMID: 32936094.

55

56

57