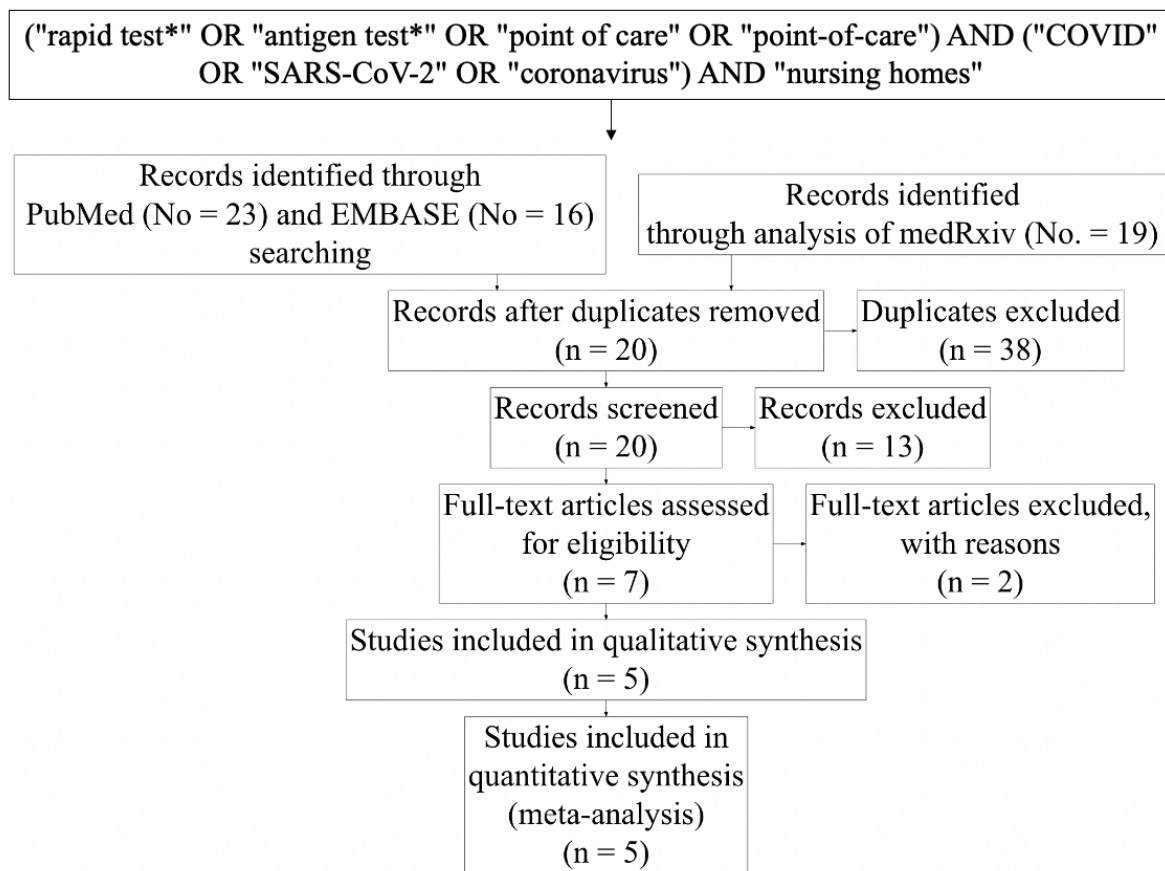
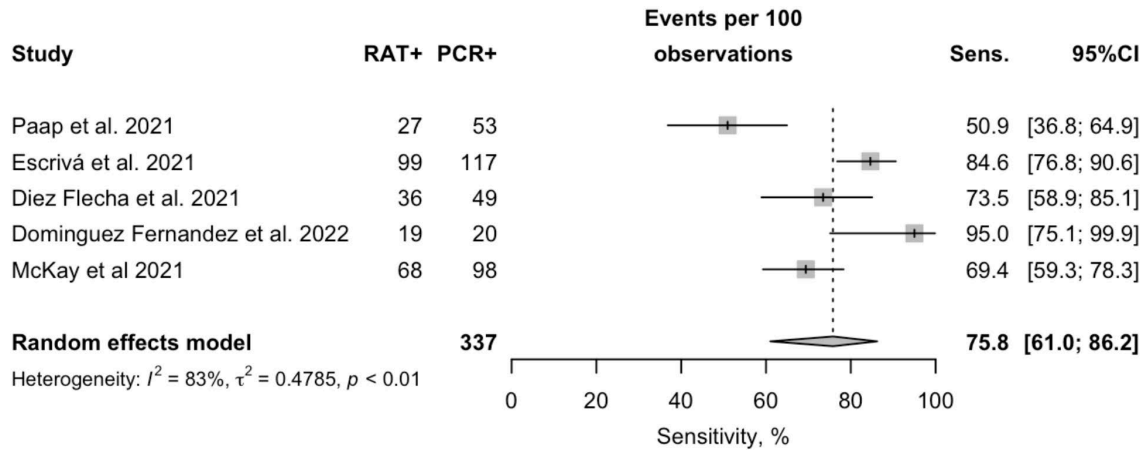


**ANNEX 1A.** Flow chart of studies included in the present meta-analysis and search strategy. Keywords were adapted according to the specificity of the assessed database/repository.

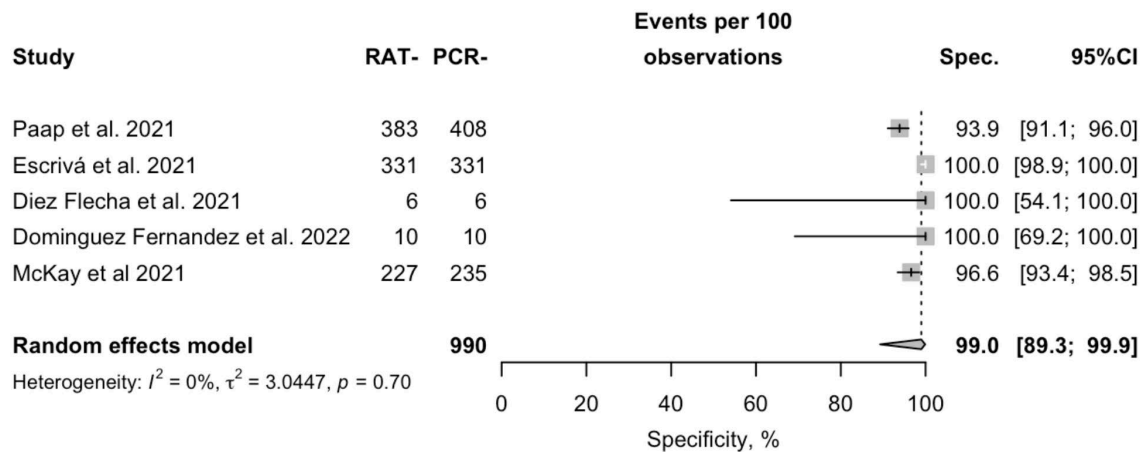


**ANNEX 1B.** Forrest plots for sensitivity, specificity, diagnostic agreement (calculated by means of Cohen's kappa), and Diagnostic Odds Ratio (DOR) for rapid antigen tests (RAT) compared to the gold standard represented by Real-Time quantitative polymerase chain reaction (PCR).

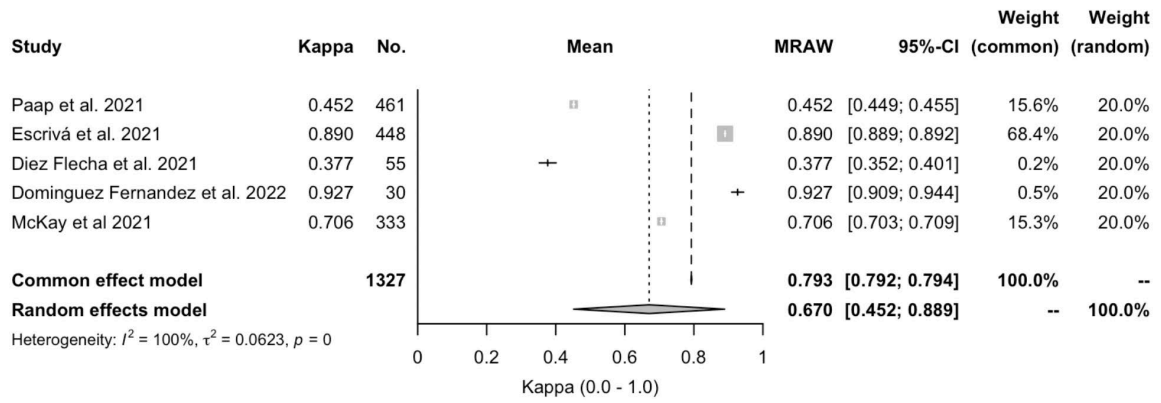
a) Sensitivity



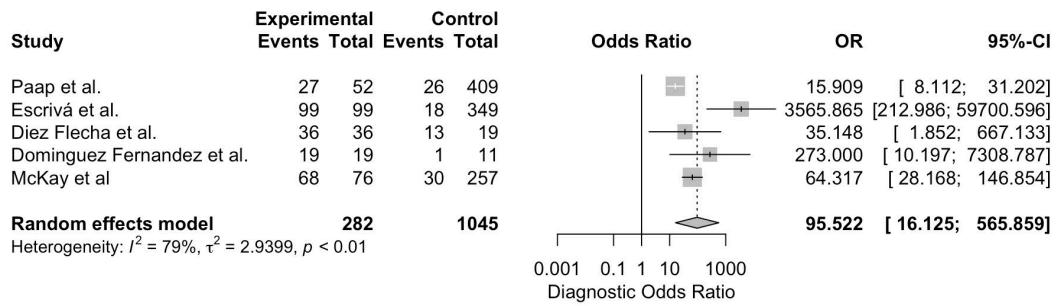
b) Specificity



c) Diagnostic Agreement



#### d) Diagnostic Odds Ratio



**ANNEX 1C.** Summary Receiver Operating Characteristic (SROC) Curve for rapid antigen tests in nursing homes settings. The substantial differences between estimates from a maximum likelihood estimation model (REML) and a fixed-effects model suggest the absence of a threshold effect in diagnostic performances of assessed tests.

