



Clinical Microbiology

Antimicrobial susceptibility and fluctuations in clonal complexes of serogroup 6 *Streptococcus pneumoniae* isolates collected from children in Beijing, China, between 1997 and 2016



Wei Shi¹, Ying Liu¹, Qinghong Meng, Lin Yuan, Wei Gao, Kaihu Yao*

Capital Medical University, National Center for Children's Health, Beijing Children's Hospital, Beijing Pediatric Research Institute, National Key Discipline of Pediatrics (Capital Medical University), National Clinical Research Center for Respiratory Diseases, Ministry of Education, Key Laboratory of Major Diseases in Children, Beijing Key Laboratory of Pediatric Respiratory Infection Diseases, Beijing, China

ARTICLE INFO

Article history:

Received 15 August 2017

Accepted 10 February 2018

Available online 14 March 2018

Associate Editor: Agnes Figueiredo

Keywords:

Streptococcus pneumoniae

Children

Antimicrobial susceptibility

Clonal complex (CC)

Sequence type (ST)

ABSTRACT

This study examined the antimicrobial susceptibility patterns and clonal complex (CC) characteristics of serogroup 6 *Streptococcus pneumoniae* isolates collected from children in Beijing, China, between 1997 and 2016. Serotypes were determined using the Quellung reaction, and the antimicrobial susceptibility profiles of the isolates were determined using the disc-diffusion method or by E-test. Sequence types (STs) were assigned based on multilocus sequence typing. A total of 250 isolates were examined, with 55.2%, 30.0%, 12.8%, and 2.0% of isolates identified as serotypes 6A, 6B, 6C, and 6D, respectively. All of the isolates were susceptible to levofloxacin and vancomycin, and the non-susceptibility rate to penicillin was 41.6%. Eighty-two distinct STs, assigned to 13 CCs and 28 singletons, were identified. CC982 was the most prevalent CC amongst serotype 6A isolates (34%), followed by CC9789 and CC3173. Amongst serotype 6B isolates, CC90 and CC4542 were the most common, accounting for 25.3% and 14.7% of isolates respectively. Over the study period, the prevalence of CC982, CC4542, and CC4536 isolates showing susceptibility to penicillin and cefuroxime decreased, and the proportion of CC3173, CC9789, CC855, and CC902 isolates showing non-susceptibility to these two antibiotics increased.

© 2018 Published by Elsevier Editora Ltda. on behalf of Sociedade Brasileira de Microbiologia. This is an open access article under the CC BY-NC-ND license (<http://creativecommons.org/licenses/by-nc-nd/4.0/>).

Introduction

Streptococcus pneumoniae, the most common cause of bacterial pneumonia, can cause a series of invasive and non-invasive diseases, and seriously threatens the health of children worldwide. Using the Danish typing system based on differences in the polysaccharide capsule, more than 90 *S. pneumoniae*

* Corresponding author.

E-mail: jiuhu2655@sina.com (K. Yao).

¹ These authors contributed equally to this work.

serotypes have been detected. Serogroup 6, comprising serotypes 6A, 6B, 6C, and 6D, is one of the most prevalent serogroups worldwide.^{1–3}

The first pneumococcal conjugate vaccine (PCV), PCV7, offered protection against seven serotypes (4, 6B, 9V, 14, 18C, 19F, and 23F) and was licensed in 2000. By 2015, PCV7 had been replaced with the higher valent vaccines PCV10 (PCV7+1, 5, and 7F) and PCV13 (PCV10+19A, 6A, and 3), which were introduced in over 130 countries.^{4,5} Research into the efficacy of PCVs showed that their widespread availability decreased nasopharyngeal carriage rates and infections caused by vaccine serotypes.^{6–8} However, a serotype replacement phenomenon appeared with the introduction of PCVs, whereby the prevalence of non-vaccine serotypes increased with concomitant decreases in vaccine serotypes.^{9–12} While there is no universal immunization program for PCVs in China, PCV7 was licensed in 2008 by the private sector, and was withdrawn at the end of 2014. Despite this, an investigation performed in 2011 showed that the vaccination coverage of PCV7 in children under 2 years old was only 9.91%.¹³ PCV13 was not introduced in China until April 2017, and serogroup 6 pneumococcal strains remain prevalent.^{14–16}

The aim of the current study was to examine the antimicrobial susceptibility profiles and clonal complex characteristics of serogroup 6 *S. pneumoniae* isolates collected from children in Beijing between 1997 and 2016, and to explore the relationship between antibiotic resistance and clonal complex.

Materials and methods

Bacterial strains

A total of 1865 *S. pneumoniae* isolates were cultured from nasopharyngeal specimens or bronchoalveolar lavage specimens collected from children visiting Beijing Children's Hospital between 1997 and 2016. The hospital is a National Children's Medical Center, with more than 3 million outpatient visits and 70,000 hospitalizations every year. Among the 1865 isolates, 250 were serogroup 6, and the percentage rate was 13.4%. The distribution of the 250 serogroup 6 isolates by year was as follows: 1997, 34 isolates; 1998, 6 isolates; 1999, 6 isolates; 2000, 12 isolates; 2001, 8 isolates; 2002, 4 isolates; 2003, 6 isolates; 2004, 19 isolates; 2005, 11 isolates; 2008, 6 isolates; 2009, 10 isolates; 2010, 9 isolates; 2013, 41 isolates; 2014, 32 isolates; 2015, 23 isolates; 2016, 23 isolates. Because of the lack of personnel, the isolates collecting work was broken off in 2006–2007 and 2011–2012. All of the isolates were identified as serotype 6A, 6B, 6C, or 6D by Quellung test using antiserum provided by Statens Serum Institute (Copenhagen, Denmark).

The Ethics Committee of Beijing Children's Hospital affiliated to Capital Medical University exempted this study from review because it focused on the bacterial isolates and did not include patient data.

Antimicrobial susceptibility testing

The minimum inhibitory concentrations (MICs) of penicillin, amoxicillin-clavulanic acid, ceftriaxone, cefuroxime,

erythromycin, imipenem, levofloxacin, and vancomycin for each of the isolates were determined using E-test strips (AB Biodisk, Solna, Sweden). Disc diffusion tests (Oxoid) were performed to ascertain antimicrobial susceptibilities to tetracycline, sulfamethoxazole-trimethoprim, and chloramphenicol. The results were interpreted in accordance with the Clinical and Laboratory Standards Institute 2016 guidelines, and both oral breakpoints (susceptible, ≤ 0.06 mg/L; intermediate, 0.12–1 mg/L; resistant, ≥ 2 mg/L) and parenteral breakpoints (susceptible, ≤ 2 mg/L; intermediate, 4 mg/L; resistant, ≥ 8 mg/L) were used for penicillin.¹⁷ *S. pneumoniae* ATCC49619 was used as quality control.

Multilocus sequence typing analysis

Isolates were characterized using multilocus sequence typing (MLST). Chromosomal DNA was extracted from overnight cultures of *S. pneumoniae* isolates grown on trypticase soy agar supplemented with 5% sheep blood (Oxoid Ltd, Basingstoke, England) using a SiMax Genomic DNA Extraction Kit (SBS Genetech Co., Ltd, China) according to the manufacturer's instructions. Seven housekeeping genes (*aroE*, *gdh*, *gki*, *recP*, *spi*, *xpt*, and *ddl*) were amplified via polymerase chain reaction from the chromosomal DNA as described previously.¹⁸ The products were sent to BGI (Beijing, China) for sequencing from both strands. The resulting sequences were compared with those of all known alleles at each of the loci, as well as with the sequence types (STs) recorded in the pneumococcal MLST database (<https://pubmlst.org/spneumoniae/>). New alleles and allelic profiles were submitted to the MLST database for name assignment. eBURST v3 software (available at <http://eburst.mlst.net/>) was used to evaluate the relationships among the isolates, and to assign strains to a clonal complex (CC) using the stringent group definition of six of seven shared alleles.¹⁹ STs sharing six identical alleles out of the seven MLST loci were assigned to the same CC.

Statistical analysis

Antimicrobial susceptibility and MLST data were analyzed using WHONET 5.6 software as recommended by the World Health Organization (<http://www.who.int/drugresistance/whonetsoftware/en/>). The χ^2 and/or Fisher's exact tests were used for analysis of categorical data, and statistical significance was set at $p \leq 0.05$.

Results

Serotyping and antimicrobial susceptibility testing

Among the 250 isolates, the rates of serotypes 6A, 6B, 6C, and 6D were 55.2% (138/250), 30.0% (75/250), 12.8% (32/250), and 2.0% (5/250), respectively. The results of antimicrobial susceptibility testing, including MIC values, for the different serotypes are shown in Table 1. All of the strains were susceptible to levofloxacin and vancomycin, and no resistance was observed toward amoxicillin-clavulanic acid, ceftriaxone,

Table 1 – Susceptibility and minimum inhibitory concentration values of the *Streptococcus pneumoniae* isolates (grouped by serotype).

Antimicrobial	Parameter	Isolates				
		Total (n = 250)	6A (n = 138)	6B (n = 75)	6C (n = 32)	6D (n = 5)
Penicillin ^a	S	146 (58.4%)	85 (61.6%)	32 (42.7%)	24 (75.0%)	5 (100.0%)
	I	94 (37.6%)	49 (35.5%)	41 (54.7%)	4 (12.5%)	0
	R	10 (4.0%)	4 (2.9%)	2 (2.7%)	4 (12.5%)	0
Amoxicillin-clavulanic acid ^b	S	244 (97.6%)	137 (99.3%)	72 (96.0%)	30 (93.8%)	5 (100.0%)
	I	6 (2.4%)	1 (0.7%)	3 (4.0%)	2 (6.2%)	0
Cefuroxime	S	156 (62.4%)	87 (63.0%)	40 (53.3%)	24 (75.0%)	5 (100.0%)
	I	20 (8.0%)	13 (9.4%)	6 (8.0%)	1 (3.1%)	0
	R	74 (29.6%)	38 (27.5%)	29 (38.7%)	7 (21.9%)	0
Ceftriaxone ^b	S	243 (97.2%)	135 (97.8%)	74 (98.7%)	29 (90.6%)	5 (100.0%)
	I	7 (2.8%)	3 (2.1%)	1 (1.3%)	3 (9.4%)	0
Imipenem ^b	S	229 (91.6%)	129 (93.5%)	69 (92.0%)	26 (81.2%)	5 (100.0%)
	I	21 (8.4%)	9 (6.5%)	6 (8.0%)	6 (18.8%)	0
Erythromycin ^b	S	9 (3.6%)	8 (5.8%)	1 (1.3%)	0	0
	R	241 (96.4%)	130 (94.2%)	74 (98.7%)	32 (100.0%)	5 (100.0%)
Tetracycline	S	14 (5.6%)	6 (4.3%)	8 (10.7%)	0	0
	I	3 (1.2%)	0	2 (2.7%)	1 (3.1%)	0
	R	233 (93.2%)	132 (95.7%)	65 (86.7%)	31 (96.9%)	5 (100.0%)
Trimethoprim/sulfamethoxazole	S	34 (13.6%)	19 (13.8%)	12 (16.0%)	3 (9.4%)	0
	I	18 (7.2%)	13 (9.4%)	4 (5.3%)	1 (3.1%)	0
	R	198 (79.2%)	106 (76.8%)	59 (78.7%)	28 (87.5%)	5 (100.0%)
Chloramphenicol ^b	S	214 (85.6%)	120 (87.0%)	58 (77.3%)	31 (96.9%)	5 (100.0%)
	R	36 (14.4%)	18 (13.0%)	17 (22.7%)	1 (3.1%)	0

Note: All 250 isolates were susceptible to levofloxacin and vancomycin.

^a Oral breakpoints (susceptible, ≤ 0.06 mg/L; intermediate, 0.12–1 mg/L; resistant, ≥ 2 mg/L) were used here.

^b No intermediate or resistant isolates were identified.

or imipenem. However, 96.4% (241/250) of isolates were resistant to erythromycin, with 236 isolates showing MIC values >256 mg/L. None of the isolates were resistant to parenteral penicillin, but the rates of intermediate resistance and resistance to oral penicillin reached 37.6% (94/250) and 4.0% (10/250), respectively. Thus, penicillin resistance was defined according to the oral penicillin breakpoints. In addition, high rates of resistance to tetracycline (93.2%) were observed.

MLST

We identified 82 distinct STs among the 250 isolates, which were assigned using eBURST analysis to 13 CCs and 28 singletons (Fig. 1). CC982 was the predominant CC, accounting for 19.2% (48/250) of isolates, followed by CC3173 (9.6%, 24/250), CC9789 (9.2%, 23/250), CC2912 (8.8%, 22/250), CC90 (7.6%, 19/250), CC2754 (6.0%, 15/250), CC4542 (5.2%, 13/250), CC4536 (5.2%, 13/250), CC855 (4.0%, 10/250), CC902 (3.6%, 9/250), CC386 (3.6%, 9/250), CC3113 (2.8%, 7/250), and CC473 (1.2%, 3/250). Overall, these 13 CCs accounted for 86.0% (215/250) of the isolates.

The distribution of CCs according to serotypes is shown in Table 2. Each serotype had a predominant CC that included

the majority of the isolates. CC982 was the most prevalent CC amongst serotype 6A isolates, accounting for 30.4% (42/138) of isolates, followed by CC9789 (15.9%, 22/138) and CC3173 (15.2%, 21/138). For serotype 6B isolates, CC90 and CC4542 were the most common CCs, accounting for 25.3% (19/75) and 14.7% (11/75) of isolates, respectively. CC2912 accounted for 20 (62.5%) serotype 6C isolates, while all of the five serotype 6D isolates belonged to CC982. Interestingly, all of the CC4536, CC855, and CC3113 isolates were identified as serotype 6A, whereas CC90 and CC386 only contained serotype 6B isolates.

Relationship between antimicrobial susceptibility and CC

Table 3 summarizes the analysis of antibiotic resistance profiles according to CCs (Table 3). Antibiotic resistance profiles of isolates belonging to the same serotype varied according to the CC. Amongst the serotype 6A isolates, all of those belonging to CC982 and CC4536 were susceptible to penicillin, and the rates of susceptibility to cefuroxime were also high (CC982, 100%; CC4536, 92.3%). On the contrary, most of the CC3173, CC9789, and CC855 isolates were non-susceptible to penicillin and cefuroxime, with non-susceptibility rates reaching 100%, 73.9%, and 100% for penicillin and 100%, 73.9%, and 80.0% for cefuroxime, respectively.

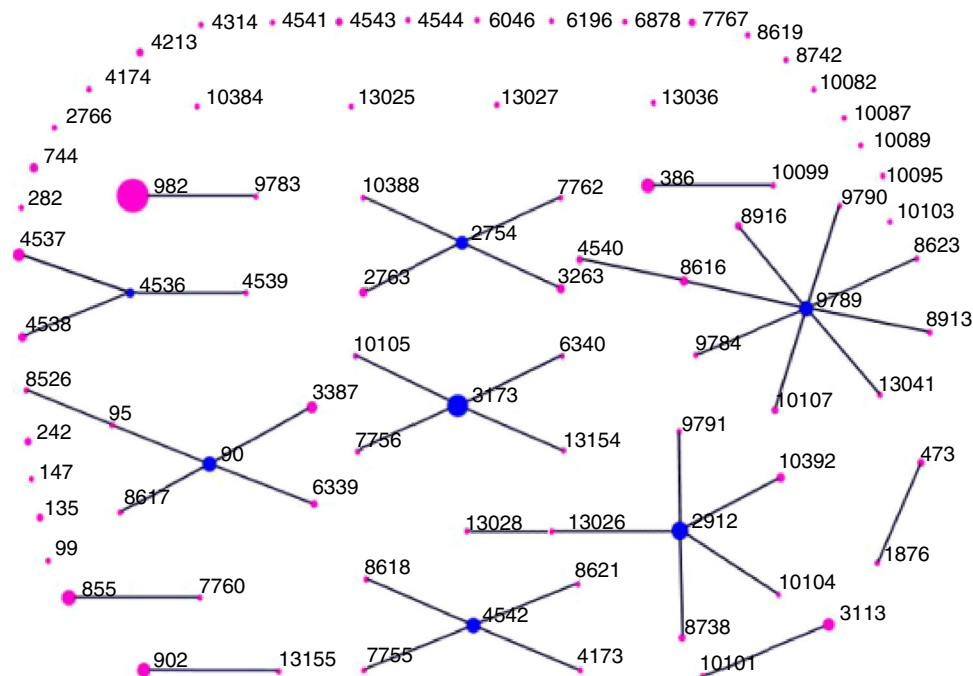


Fig. 1 – Distribution of sequence types (STs) amongst the clonal complexes of *Streptococcus pneumoniae*. The image depicts eBURST analysis of the multilocus sequence typing data generated from all of the 250 *Streptococcus pneumoniae* isolates analyzed in this study. STs that are linked by a line belong to the same cluster. Circle sizes are proportional to the number of isolates within the ST.

Of the serotype 6B isolates, all of the CC4542 isolates were susceptible to penicillin and cefuroxime, but CC902 isolates had a non-susceptibility rate of 100% for these two antibiotics. None of the CC90 isolates were susceptible to penicillin, and showed a cefuroxime resistance rate of 89.5%.

Fluctuation of serotypes and CCs between years

For effective comparison, the study period was divided into six ranges: 1997–1999, 2000–2002, 2003–2005, 2008–2010, 2013–2014, and 2015–2016. The distribution of serotypes and CCs in the different periods is shown in Fig. 2. A steady increase in the prevalence of serotype 6C could be seen from 2008, while the prevalence of serotype 6A, which was the most common serotype, decreased over the study period ($\chi^2 = 11.963$, $p < 0.05$).

Over the study period, the percentage of CC982 isolates decreased from 37.0% in 1997–1999 to 2.2% in 2015–2016. The percentage of CC982, CC4542, and CC4536 isolates showing high susceptibility to penicillin and cefuroxime decreased over the study period, with no susceptible isolates identified after 2010, while the proportion of CC3173, CC9789, CC855, and CC902 isolates showing non-susceptibility to penicillin and cefuroxime increased.

Discussion

This study investigated the antibiotic susceptibility profiles and fluctuations in the dominant CCs of serogroup 6

S. pneumoniae strains isolated from children in Beijing, the capital city of China, between 1997 and 2016. Of the 250 isolates examined, 55.2%, 30.0%, 12.8%, and 2.0% were identified as serotypes 6A, 6B, 6C, and 6D, respectively. Although the majority of the isolates belonged to serotype 6A, the prevalence of this serotype decreased over the study period. Research from countries with high rates of PCV7 vaccination have shown serotype replacement of serogroup 6. Significant decreases in the prevalence of serotype 6A and 6B strains were observed in the UK between 2006/2007 and 2010/2011, coinciding with the addition of PCV7 to the UK National Immunization Program in September 2006, and its replacement with PCV13 in April 2010.¹¹ A study from Israel conducted from 1999 to 2014, pre- and post-PCV implementation, analyzed the impact of PCVs on the prevalence of serogroup 6 carriage, and the incidence of pneumococcal conjunctivitis, otitis media, and invasive diseases caused by serogroup 6. The researchers found that the carriage rates of serotype 6A and 6B isolates, along with cases of conjunctivitis, otitis media, and invasive diseases caused by serotype 6A and 6B, decreased remarkably in the post-PCV7 period. However, this decrease was offset by a significant increase in the prevalence of serotype 6C isolates, although this was halted after the implementation of PCV13.²⁰ Several other studies report a similar phenomenon, whereby the prevalence of 6A and 6B isolates decreased with the introduction of PCV7 or PCV13, but the proportion of 6C isolates increased until the introduction of PCV13.^{21,22} The efficacy of PCV13 against serotype 6C isolates results from the extensive structural and immunological similarity between serotypes 6A and 6C. The inclusion of 6A in PCV13 results in a higher concentration of anti-6C antibodies than those obtained by

Table 2 – Distribution of clonal complexes/sequence types of serogroup 6 *Streptococcus pneumoniae* isolates by serotype.

Serotypes	No.	CC982	CC3173	CC9789	CC2912	CC90	CC2754	CC4542	CC4536	CC855	CC902	CC386	CC3113	CC473	Others
6A	138	42 (30.4%)	21 (15.2%)	22 (15.9%)	2 (1.4%)	0	6 (4.3%)	1 (0.7%)	13 (9.4%)	10 (7.2%)	1 (0.7%)	0	7 (5.1%)	2 (1.4%)	11 (8.0%)
6B	75	0	3 (4.0%)	1 (1.3%)	0	19 (25.3%)	7 (9.3%)	11 (14.7%)	0	0	8 (10.7%)	9 (12.0%)	0	1 (1.3%)	16 (21.3%)
6C	32	1 (3.1%)	0	0	20 (62.5%)	0	2 (6.3%)	1 (3.1%)	0	0	0	0	0	0	8 (25.0%)
6D	5	5 (100%)	0	0	0	0	0	0	0	0	0	0	0	0	0
Total	250	48	24	23	22	19	15	13	13	10	9	9	7	3	35

% , Number of serotypes divided by number of clonal complexes/sequence types.

PCV7.²³ We also detected an increase of serotype 6C in the current study, although there were not many 6C isolates overall.

S. pneumoniae MLST is based on sequence data from standardized fragments of seven housekeeping genes. The MLST classification reveals important insights into the geographic spread of successful pathogenic clones, as well as the emergence of associations between STs and serotypes, combinations that can be traced back to serotype switching events. Among *S. pneumoniae* isolates, antimicrobial resistance associated with specific pneumococcal serotypes, even CCs/STs, most often reflects the spread of a few internationally disseminated clones recognized by the Pneumococcal Molecular Epidemiology Network (PMEN; <http://www.pneumogen.net/pmen/>). These clones are frequently associated with disease, widely distributed geographically, and usually resistant to one or more clinically relevant antibiotics.²⁴

Data from the current study showed fluctuations in the dominance of particular CCs. The proportion of CCs with high rates of non-susceptibility to penicillin and cefuroxime, such as CC3173, CC9789, CC855, and CC902, increased during the study period. On the contrary, CC982, CC4542, and CC4536, all of which show high rates of susceptibility to penicillin and cefuroxime, decreased or even disappeared. Previous studies have also shown fluctuation of CCs/STs. For example, researches from United States,²⁵ Canada²⁶ and Russia²⁷ showed that amongst serotype 19A isolates, CC320, which has a multidrug-resistant phenotype with high β -lactam MICs, replaced CC230, which is associated with high susceptibility to penicillin. Our previous researches from Beijing, China indicated that the globally-disseminated resistant clone CC271, which has a high rate of non-susceptibility to β -lactam antibiotics, took the place of CC983 amongst serotype 19F pneumococcus strains,²⁸ while amongst serotype 23F isolates, ST342 was replaced by ST81, which demonstrates higher β -lactam resistance.²⁹ Also our study on serotype 14 strains from Beijing, China revealed that CC876 overtook CC875 as the dominant CC, with CC876 isolates showing higher non-susceptibility rates to β -lactam antibiotics than CC875 isolates.³⁰ All of these examples of clonal shift phenomena were assumed to be caused by antibiotic pressure, as CCs/STs with high rates of antibiotic resistance replaced those with low resistance.

Taken together, these observations underline the importance of further long-term surveillance of *S. pneumoniae* based on serotype and genotype, combined with antimicrobial susceptibility profile analysis, in the hopes of preventing infections caused by this important human pathogen.

Ethical statement

The pneumococcal isolates involved in this study were collected previously during a series of epidemiological surveys on this bacterium. The Ethics Committee of Beijing Children's Hospital affiliated to Capital Medical University exempted this study from review because it focused on the bacterial isolates and did not include patient data.

Table 3 – Susceptibility and minimum inhibitory concentration values of the *Streptococcus pneumoniae* isolates grouped by clonal complex.

Antimicrobial	Parameter	Isolates							
		CC982 (n = 48)	CC3173 (n = 24)	CC9789 (n = 23)	CC2912 (n = 22)	CC90 (n = 19)	CC2754 (n = 15)	CC4542 (n = 13)	CC4536 (n = 13)
Penicillin ^a	S	48 (100%)	0	6 (26.1%)	17 (77.3%)	0	14 (93.3%)	13 (100%)	13 (100%)
	I	0	22 (91.7%)	16 (69.6%)	1 (4.5%)	18 (94.7%)	1 (6.7%)	0	0
	R	0	2 (8.3%)	1 (4.3%)	4 (18.2%)	1 (5.3%)	0	0	0
	MIC50	0.032	0.75	0.5	0.032	0.75	0.032	0.016	0.023
	MIC90	0.064	1	0.75	1.5	1	0.064	0.032	0.032
Amoxicillin-clavulanic acid ^b	S	48 (100%)	24 (100%)	22 (95.7%)	21 (95.5%)	16 (84.2%)	15 (100%)	13 (100%)	13 (100%)
	I	0	0	1 (4.3%)	1 (4.5%)	3 (15.8%)	0	0	0
	MIC50	0.016	0.75	0.5	0.016	0.75	0.016	0.016	0.016
	MIC90	0.032	1	0.75	0.75	1.5	0.38	0.032	0.032
Cefuroxime	S	48 (100%)	0	6 (26.1%)	17 (77.3%)	2 (10.5%)	13 (86.7%)	13 (100%)	12 (92.3%)
	I	0	2 (8.3%)	4 (17.4%)	1 (4.5%)	0	0	0	1 (7.7%)
	R	0	22 (91.7%)	13 (56.5%)	4 (18.2%)	17 (89.5%)	2 (13.3%)	0	0
	MIC50	0.064	2	1.5	0.064	1.5	0.047	0.023	0.032
	MIC90	0.125	3	2	3	2	1.5	0.25	0.064
Ceftriaxone ^b	S	48 (100%)	20 (83.3%)	23 (100%)	21 (95.5%)	19 (100%)	15 (100%)	13 (100%)	13 (100%)
	I	0	4 (16.7%)	0	1 (4.5%)	0	0	0	0
	MIC50	0.032	0.75	0.38	0.032	0.5	0.032	0.016	0.023
	MIC90	0.064	1.5	0.75	1	1	0.75	0.064	0.047
Imipenem ^b	S	48 (100%)	17 (70.8%)	21 (91.3%)	17 (77.3%)	14 (73.7%)	15 (100%)	13 (100%)	13 (100%)
	I	0	7 (29.2%)	2 (8.7%)	5 (22.7%)	5 (26.3%)	0	0	0
	MIC50	0.012	0.125	0.125	0.016	0.125	0.008	0.016	0.012
	MIC90	0.023	0.25	0.125	0.19	0.25	0.023	0.023	0.023
Erythromycin ^b	S	1 (2.1%)	0	1 (4.3%)	0	0	0	0	4 (30.8%)
	R	47 (97.9%)	24 (100%)	22 (95.7%)	22 (100%)	19 (100%)	15 (100%)	13 (100%)	9 (69.2%)
	MIC50	>256	>256	>256	>256	>256	>256	>256	>256
	MIC90	>256	>256	>256	>256	>256	>256	>256	>256
Tetracycline	S	0	0	1 (4.3%)	0	1 (5.3%)	2 (13.3%)	0	0
	I	0	0	0	0	0	0	0	0
	R	48 (100%)	24 (100%)	22 (95.7%)	22 (100%)	18 (94.7%)	13 (86.7%)	13 (100%)	13 (100%)
Trimethoprim/sulfamethoxazole	S	0	0	1 (4.3%)	2 (9.1%)	1 (5.3%)	0	0	4 (30.8%)
	I	1 (2.1%)	3 (12.5%)	0	1 (4.5%)	0	2 (13.3%)	0	3 (23.1%)
	R	47 (97.9%)	21 (87.5%)	22 (95.7%)	19 (86.4%)	18 (94.7%)	13 (86.7%)	13 (100%)	6 (46.2%)
Chloramphenicol ^b	S	46 (95.8%)	24 (100%)	18 (78.3%)	22 (100%)	10 (52.6%)	14 (93.3%)	12 (92.3%)	7 (53.8%)
	R	2 (4.2%)	0	5 (21.7%)	0	9 (47.4%)	1 (6.7%)	1 (7.7%)	6 (46.2%)

Table 3 (Continued)

Antimicrobial	Parameter	Isolates						Total (n = 250)
		CC855 (n = 10)	CC902 (n = 9)	CC386 (n = 9)	CC3113 (n = 7)	CC473 (n = 3)	Others (n = 35)	
Penicillin ^a	S	0	0	8 (88.9%)	7 (100%)	0	20 (57.1%)	146 (58.4%)
	I	10 (100%)	8 (88.9%)	1 (11.1%)	0	3 (100%)	14 (40.0%)	94 (37.6%)
	R	0	1 (11.1%)	0	0	0	1 (2.9%)	10 (4.0%)
	MIC50	0.25	0.5	0.064	0.023	0.25	0.064	0.047
	MIC90	0.75	1.5	0.094	0.023	0.38	1	0.75
Amoxicillin-clavulanic acid ^b	S	10 (100%)	9 (100%)	9 (100%)	7 (100%)	3 (100%)	34 (97.1%)	244 (97.6%)
	I	0	0	0	0	0	1 (2.9%)	6 (2.4%)
	MIC50	0.5	0.38	0.064	0.016	0.125	0.032	0.032
	MIC90	1	0.75	0.094	0.023	0.125	1	0.75
Cefuroxime	S	2 (20.0%)	0	9 (100%)	7 (100%)	3 (100%)	24 (68.6%)	156 (62.4%)
	I	5 (50.0%)	5 (55.6%)	0	0	0	2 (5.7%)	20 (8.0%)
	R	3 (30.0%)	4 (44.4%)	0	0	0	9 (25.7%)	74 (29.6%)
	MIC50	1	1	0.094	0.094	0.38	0.094	0.094
	MIC90	1.5	1.5	0.125	0.19	0.5	2	2
Ceftriaxone ^b	S	10 (100%)	9 (100%)	9 (100%)	7 (100%)	3 (100%)	33 (94.3%)	243 (97.2%)
	I	0	0	0	0	0	2 (5.7%)	7 (2.8%)
	MIC50	0.38	0.5	0.064	0.125	0.125	0.047	0.064
	MIC90	0.5	1	0.125	0.19	0.19	0.75	0.75
Imipenem ^b	S	9 (90.0%)	9 (100%)	9 (100%)	7 (100%)	3 (100%)	34 (97.1%)	229 (91.6%)
	I	1 (10.0%)	0	0	0	0	1 (2.9%)	21 (8.4%)
	MIC50	0.094	0.094	0.032	0.008	0.032	0.023	0.023
	MIC90	0.125	0.125	0.064	0.012	0.032	0.125	0.125
Erythromycin ^b	S	0	0	0	0	0	3 (8.6%)	9 (3.6%)
	R	10 (100%)	9 (100%)	9 (100%)	7 (100%)	3 (100%)	32 (91.4%)	241 (96.4%)
	MIC50	>256	>256	>256	>256	>256	>256	>256
	MIC90	>256	>256	>256	>256	>256	>256	>256
Tetracycline	S	0	2 (22.2%)	0	0	2 (66.7%)	6 (17.1%)	14 (5.6%)
	I	0	1 (11.1%)	0	0	0	2 (5.7%)	3 (1.2%)
	R	10 (100%)	6 (66.7%)	9 (100%)	7 (100%)	1 (33.3%)	27 (77.1%)	233 (93.2%)
Trimethoprim/sulfamethoxazole	S	9 (90.0%)	0	8 (88.9%)	0	3 (100%)	6 (17.1%)	34 (13.6%)
	I	1 (10.0%)	1 (11.1%)	0	3 (42.9%)	0	3 (8.6%)	18 (7.2%)
	R	0	8 (88.9%)	1 (11.1%)	4 (57.1%)	0	26 (74.3%)	198 (79.2%)
Chloramphenicol ^b	S	9 (90.0%)	9 (100%)	9 (100%)	7 (100%)	2 (66.7%)	25 (71.4%)	214 (85.6%)
	R	1 (10.0%)	0	0	0	1 (33.3%)	10 (28.6%)	36 (14.4%)

Note: All 250 isolates were susceptible to levofloxacin and vancomycin.

^a Oral breakpoints (susceptible, ≤ 0.06 mg/L; intermediate, 0.12–1 mg/L; resistant, ≥ 2 mg/L) were used here.

^b No intermediate or resistant isolates were identified.

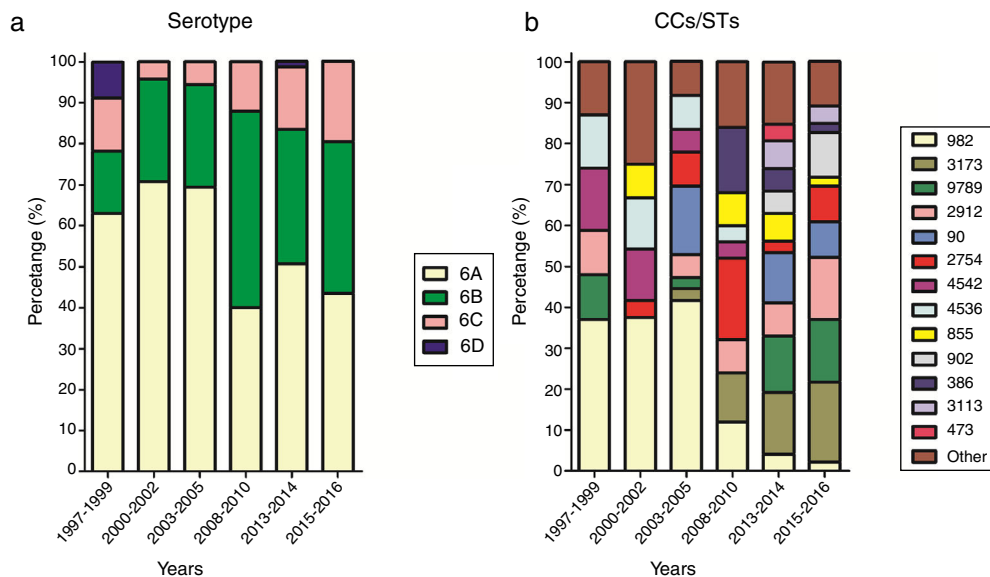


Fig. 2 – Distribution of serotypes and clonal complexes/sequence types of *Streptococcus pneumoniae* isolates by time period.

Authors' contributions

All of the authors participated in the design of the study. WS, YL, QM, LY, and WG collected the isolates and performed the antimicrobial susceptibility test. WS, YL, and QM did the MLST part. WS, YL and KY collected the data, analyzed them, interpreted the results, and drafted the manuscript. All authors reviewed and revised the manuscript and approved the final version.

Funding

This study was supported by the Research Funds of Profession Quota Budget from Beijing Municipal Science and Technology Commission [grant number 2016-bjsekyjs-3] and the Beijing Talents Fund [grant number 2015000021469G209]. The sponsors had no role in study design, in the collection, analysis, and interpretation of data, in the writing of the report, or in the decision to submit the article for publication.

Conflicts of interest

None declared.

Acknowledgments

We thank Tamsin Sheen, PhD, from Liwen Bianji, Edanz Editing China (www.liwenbianji.cn/ac), for editing the English text of a draft of this manuscript.

REFERENCES

- Hackel M, Lascols C, Bouchillon S, Hilton B, Morgenstern D, Purdy J. Serotype prevalence and antibiotic resistance in *Streptococcus pneumoniae* clinical isolates among global populations. *Vaccine*. 2013;31(42):4881–4887.
- Safari D, Kurniati N, Waslia L, et al. Serotype distribution and antibiotic susceptibility of *Streptococcus pneumoniae* strains carried by children infected with human immunodeficiency virus. *PLOS ONE*. 2014;9(10):e110526.
- Raddaoui A, Simões AS, Baaboura R, et al. Serotype distribution, antibiotic resistance and clonality of *Streptococcus pneumoniae* isolated from immunocompromised patients in Tunisia. *PLOS ONE*. 2015;10(10):e0140390.
- World Health Organization. WHO vaccine-preventable diseases: monitoring system. 2015 global summary; 2015. http://apps.who.int/immunization_monitoring/globalsummary/schedules.
- International Vaccine Access Center (IVAC), Johns Hopkins Bloomberg School of Public Health. Vaccine Information Management System (VIMS) Global Vaccine Introduction Report 2015; www.jhsph.edu/ivac/vims.html.
- Esposito S, Principi N, ESCMID Vaccine Study Group. Direct and indirect effects of the 13-valent pneumococcal conjugate vaccine administered to infants and young children. *Future Microbiol*. 2015;10(10):1599–1607.
- Moore MR, Link-Gelles R, Schaffner W, et al. Impact of 13-valent pneumococcal conjugate vaccine used in children on invasive pneumococcal disease in children and adults in the United States: analysis of multisite, population based surveillance. *Lancet Infect Dis*. 2015;15(3):301–309.
- Regev-Yochay G, Katzir M, Strahilevitz J, et al. The herd effects of infants PCV7/PCV13 sequential implementation on adult invasive pneumococcal disease, six years post implementation; a nationwide study in Israel. *Vaccine*. 2017;35(18):2449–2456.
- Weinberger DM, Malley R, Lipsitch M. Serotype replacement in disease following pneumococcal vaccination: a discussion of the evidence. *Lancet*. 2011;378(9807):1962–1973.
- Feikin DR, Kagucia EW, Loo JD, et al. Serotype-specific changes in invasive pneumococcal disease after pneumococcal conjugate vaccine introduction: a pooled analysis of multiple surveillance sites. *PLoS Med*. 2013;10(9):e1001517.
- Gladstone RA, Jefferies JM, Tocheva AS, et al. Five winters of pneumococcal serotype replacement in UK carriage following PCV introduction. *Vaccine*. 2015;33(17):2015–2021.

12. Devine VT, Cleary DW, Jefferies JM, et al. The rise and fall of pneumococcal serotypes carried in the PCV era. *Vaccine*. 2017;35(9):1293–1298.
13. Zheng J, Cao L, Guo SAK, et al. Survey on the immunization status of non-EPI vaccines among children aged 1 to 2 years in China (in Chinese). *Chin J Vaccines Immun*. 2012;18:233–237.
14. Huang S, Liu X, Lao W, et al. Serotype distribution and antibiotic resistance of *Streptococcus pneumoniae* isolates collected at a Chinese hospital from 2011 to 2013. *BMC Infect Dis*. 2015;15:312.
15. Lyu S, Yao KH, Dong F, et al. Vaccine serotypes of *Streptococcus pneumoniae* with high-level antibiotic resistance isolated more frequently seven years after the licensure of PCV7 in Beijing. *Pediatr Infect Dis J*. 2016;35(3):316–321.
16. Wang J, Liu F, Ao P, et al. Detection of serotype distribution and drug resistance of *Streptococcus pneumoniae* isolated from pediatric patients. *Lab Med*. 2017;48(1):39–45.
17. Clinical and Laboratory Standards Institute (CLSI). Performance Standards for antimicrobial susceptibility testing. In: *Twenty-sixth Informational Supplement*. Wayne, PA: Clinical and Laboratory Standards Institute; 2016. M100-S26.
18. Enright MC, Spratt BG. A multilocus sequence typing scheme for *Streptococcus pneumoniae*: identification of clones associated with serious invasive disease. *Microbiology*. 1998;144(Pt 11):3049–3060.
19. Feil EJ, Li BC, Aanensen DM, Hanage WP, Spratt BG. eBURST: inferring patterns of evolutionary descent among clusters of related bacterial genotypes from multilocus sequence typing data. *J Bacteriol*. 2004;186:1518–1530.
20. Porat N, Benisty R, Givon-Lavi N, Trefler R, Dagan R. The impact of pneumococcal conjugate vaccines on carriage of diseases caused by *Streptococcus pneumoniae* serotypes 6C and 6D in southern Israel. *Vaccine*. 2016;34(25):2806–2812.
21. Moore CE, Paul J, Foster D, et al. Reduction of invasive pneumococcal disease 3 years after the introduction of the 13-valent conjugate vaccine in the Oxfordshire region of England. *J Infect Dis*. 2014;210(7):1001–1011.
22. Ben-Shimol S, Givon-Lavi N, Leibovitz E, Raiz S, Greenberg D, Dagan R. Near-elimination of otitis media caused by 13-valent pneumococcal conjugate vaccine (PCV) serotypes in southern Israel shortly after sequential introduction of 7-valent/13-valent PCV. *Clin Infect Dis*. 2014;59(12):1724–1732.
23. Cooper D, Yu X, Sidhu M, Nahm MH, Fernsten P, Jansen KU. The 13-valent pneumococcal conjugate vaccine (PCV13) elicits cross-functional opsonophagocytic killing responses in humans to *Streptococcus pneumoniae* serotypes 6C and 7A. *Vaccine*. 2011;29(41):7207–7211.
24. McGee L, McDougal L, Zhou J, et al. Nomenclature of major antimicrobial-resistant clones of *Streptococcus pneumoniae* defined by the pneumococcal molecular epidemiology network. *J Clin Microbiol*. 2001;39(7):2565–2571.
25. Beall BW, Gertz RE, Hulkower RL, Whitney CG, Moore MR, Brueggemann AB. Shifting genetic structure of invasive serotype 19A pneumococci in the United States. *J Infect Dis*. 2011;203(10):1360–1368.
26. Golden AR, Rosenthal M, Fultz B, et al. Characterization of MDR and XDR *Streptococcus pneumoniae* in Canada, 2007–13. *J Antimicrob Chemother*. 2015;70(8):2199–2202.
27. Mayanskiy N, Savinova T, Alyabieva N, et al. Antimicrobial resistance, penicillin-binding protein sequences, and pilus islet carriage in relation to clonal evolution of *Streptococcus pneumoniae* serotype 19A in Russia, 2002–2013. *Epidemiol Infect*. 2017;145(8):1708–1719.
28. Li QH, Yao KH, Yu SJ, et al. Spread of multidrug-resistant clonal complex 271 of serotype 19F *Streptococcus pneumoniae* in Beijing, China: characterization of serotype 19F. *Epidemiol Infect*. 2013;141(12):2492–2496.
29. Ma X, Yao KH, Yu SJ, et al. Genotype replacement within serotype 23F *Streptococcus pneumoniae* in Beijing, China: characterization of serotype 23F. *Epidemiol Infect*. 2013;141(8):1690–1696.
30. He M, Yao K, Shi W, et al. Dynamic of serotype 14 *Streptococcus pneumoniae* population causing acute respiratory infections among children in China (1997–2012). *BMC Infect Dis*. 2015;15:266.